

iPad Post Mount

Assembly Instructions



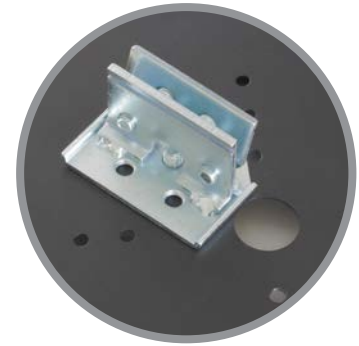
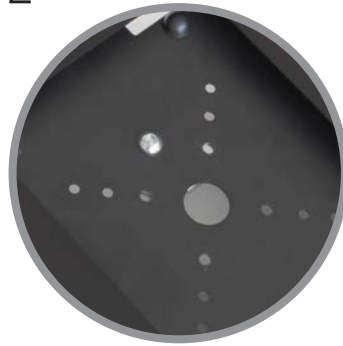
iPad Post Mount

1



Carefully remove iPad components from carton.

2



Align central threaded hole of interface bracket with offset hole in enclosure back. Insert screw through iPad enclosure and fully tighten to secure.

3



Unlock the iPad enclosure by inserting key into security lock and rotate 'QUARTER TURN ONLY' clockwise or counter-clockwise through 90 degrees which releases the locking pin. Return key back to original position to remove. Lift fascia out of enclosure and place iPad inside, gently pressing all four corners down into mouldings to hold. Replace fascia and depress lock button to secure enclosure.

iPad Post Mount

4



Locate bracket clamp grooves into selected channel of 8-way post.

5



Adjust and tighten 4 screws at side of interface bracket until securely clamped to post at required height.

